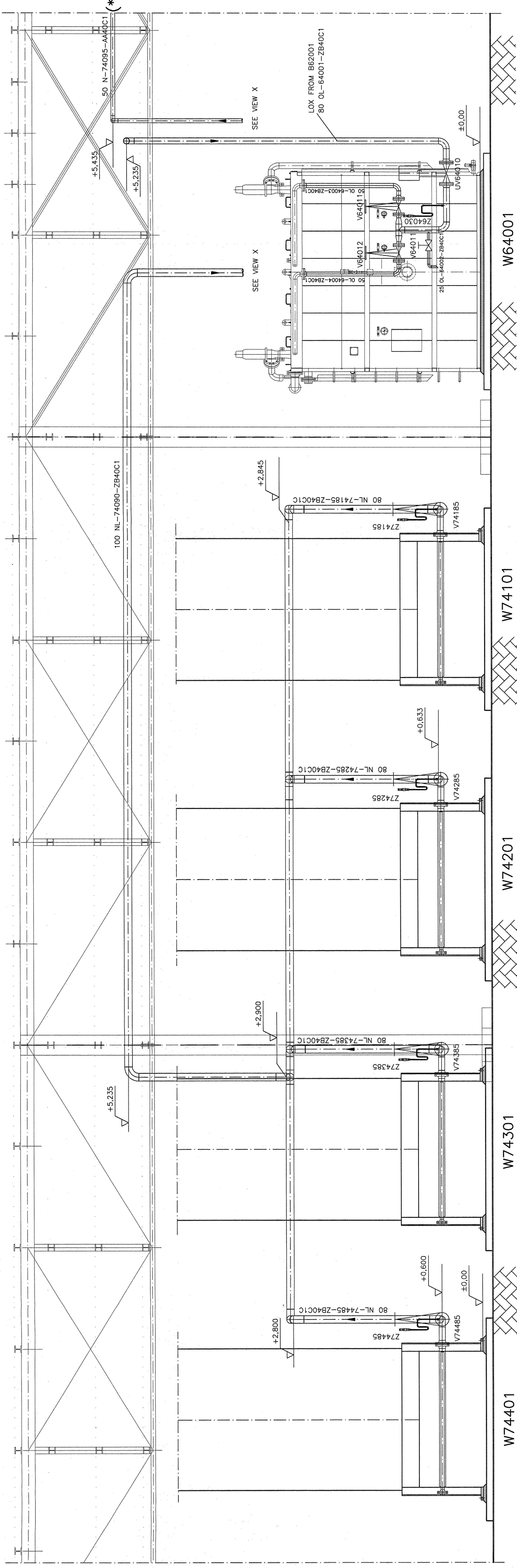
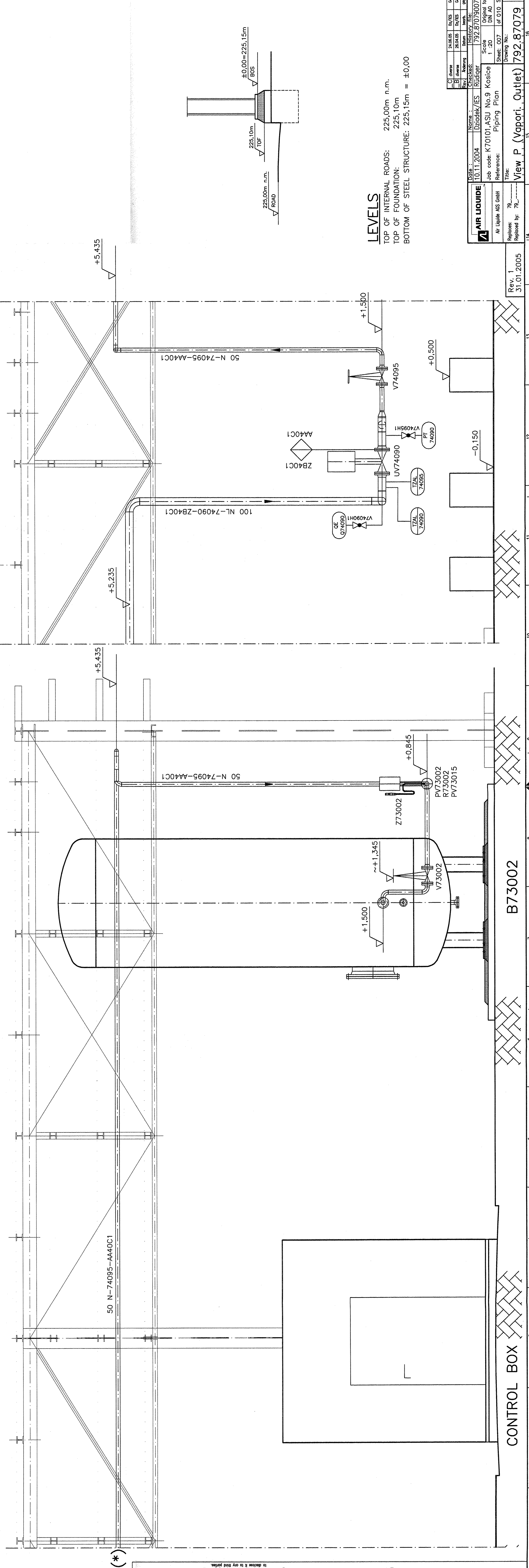


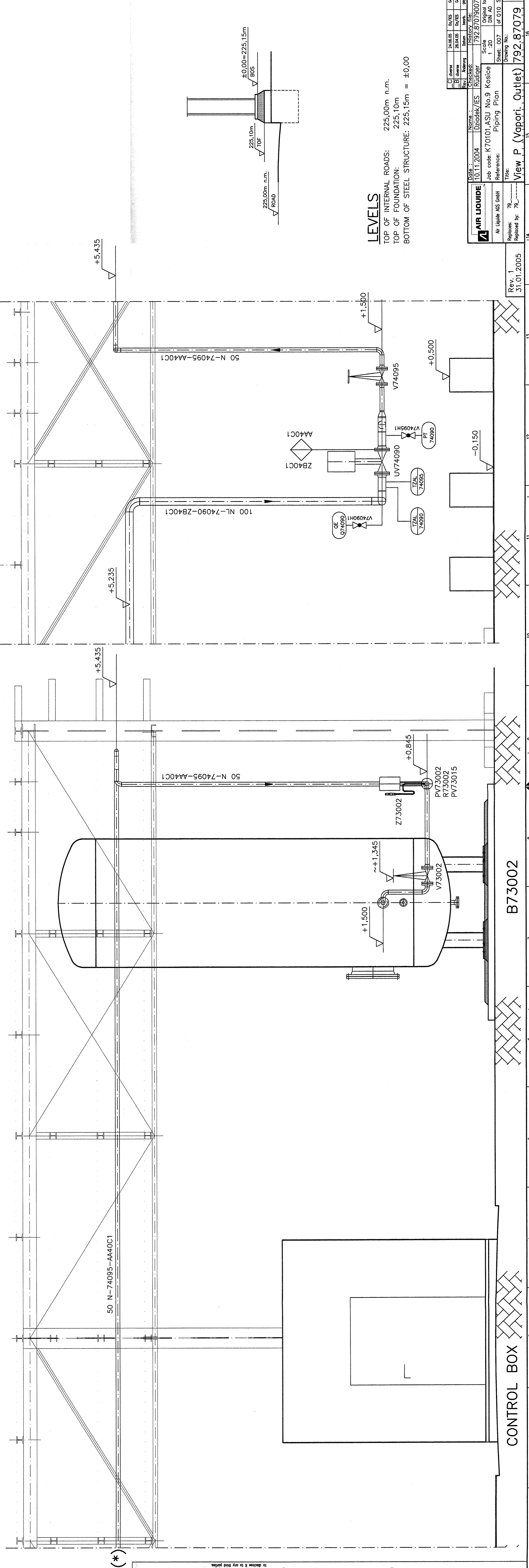
VIEW P M 1 : 20



VIEW P M 1 : 20

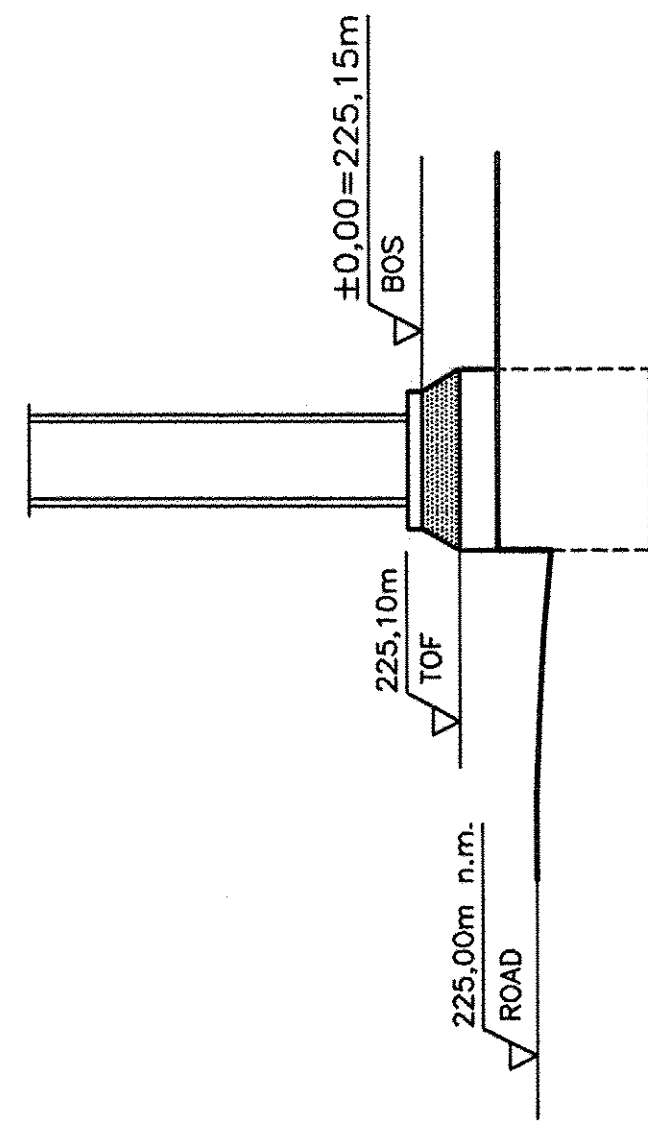


VIEW X M 1 : 20



LEVELS

TOP OF INTERNAL ROADS: 225.00m n.m.
TOP OF FOUNDATION: 225.10m
BOTTOM OF STEEL STRUCTURE: 225.15m = ±0.00



CONTROL BOX

B73002

Rev. 1
31.01.2005

View P (Vapori, Outlet) 792.87079

Project	792.87079	Client	Kosice
Design	792.87079	Check	792.87079
Drawn	792.87079	Scale	1:20
Sheet	007	of 010	Sheets
Reference	Piping Plan	Job code	K70101, ASU No.9
Title	Piping Plan	Project	792.87079
Revised by	792.87079	Revised	792.87079

Author	792.87079	Check	792.87079
Design	792.87079	Scale	1:20
Drawn	792.87079	Sheet	007
Sheet	007	of 010	Sheets
Reference	Piping Plan	Job code	K70101, ASU No.9
Title	Piping Plan	Project	792.87079
Revised by	792.87079	Revised	792.87079